

TABLE OF CONTENTS

Indistarter

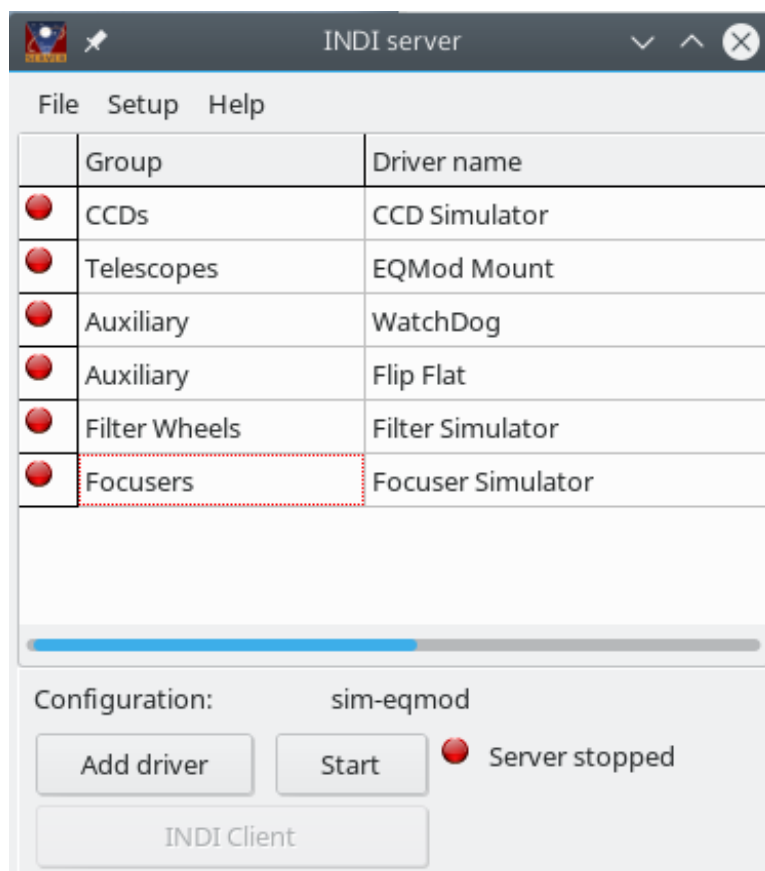
[Home](#)[Configuration](#)[Setup menu](#)[Add drivers](#)

Home

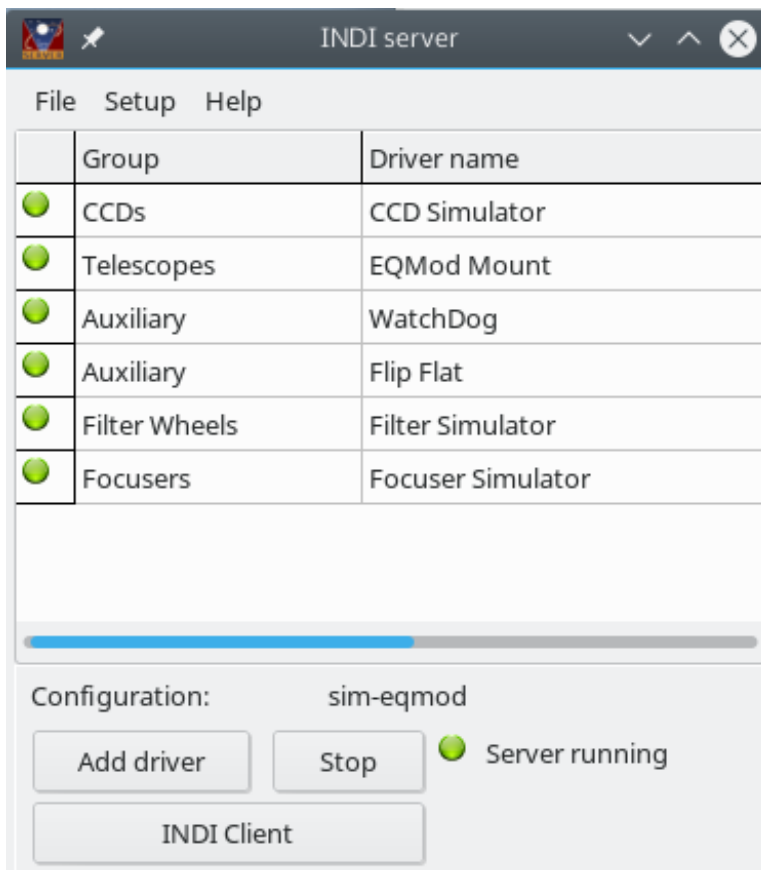
Indistarter

Indistarter is a simple program to configure and run a [INDI server](#) to connect your [astronomical equipment](#).

The first time you run indistarter you are presented with an empty screen. You need to complete the initial [Configuration](#) before you can use the program.

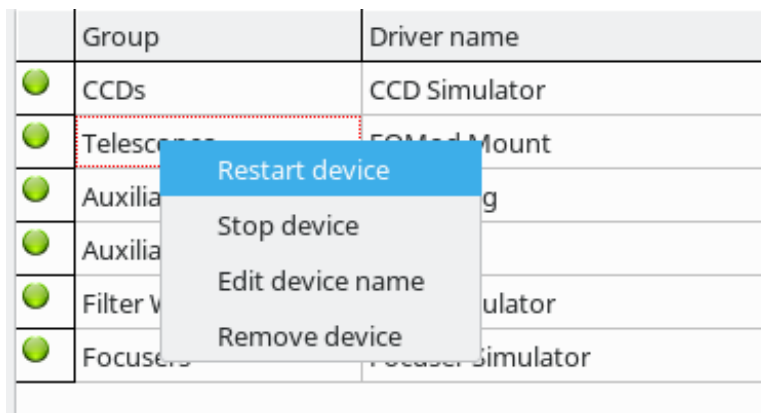


Click the **Start** button to start the server and the configured drivers.

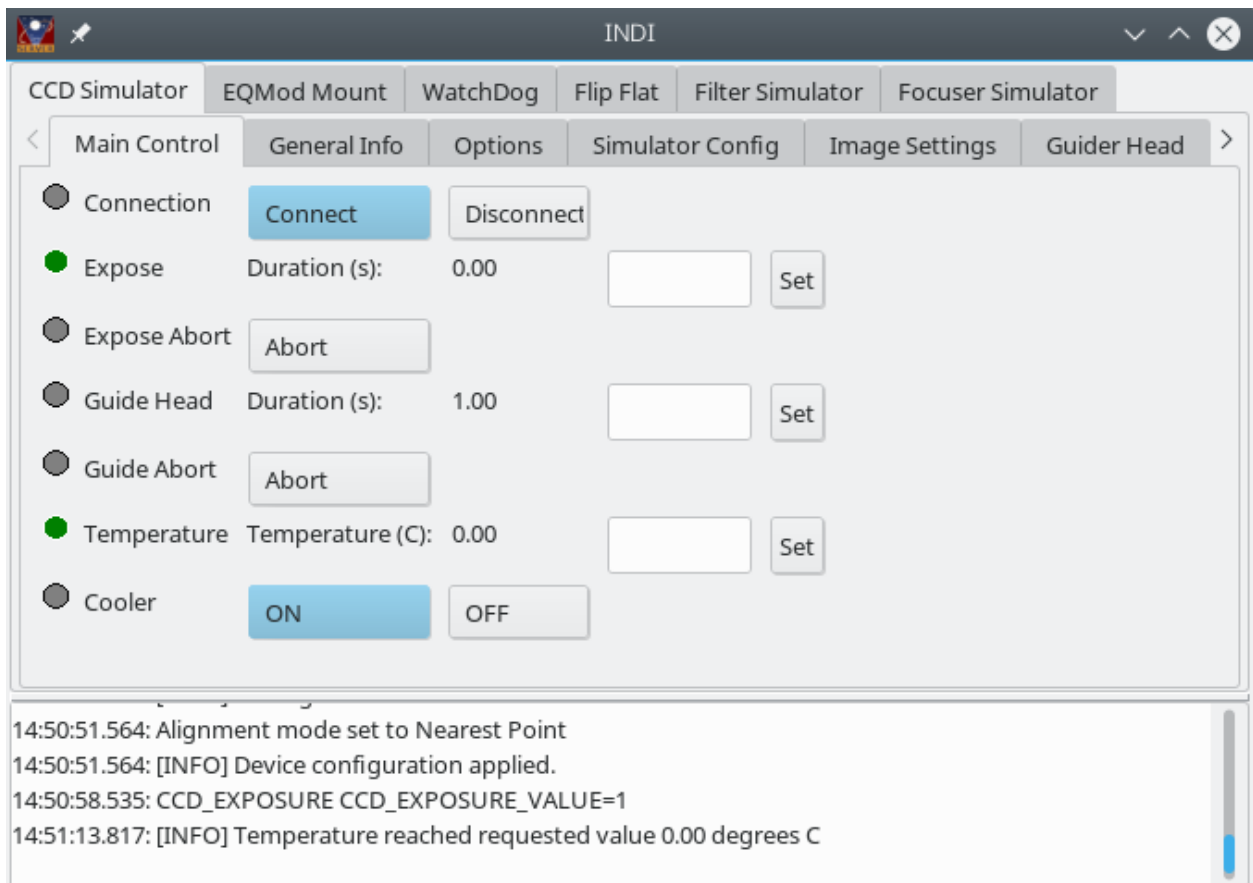


The light turn to green when the server and the drivers are started.

A right click menu let you restart or stop a driver individually.



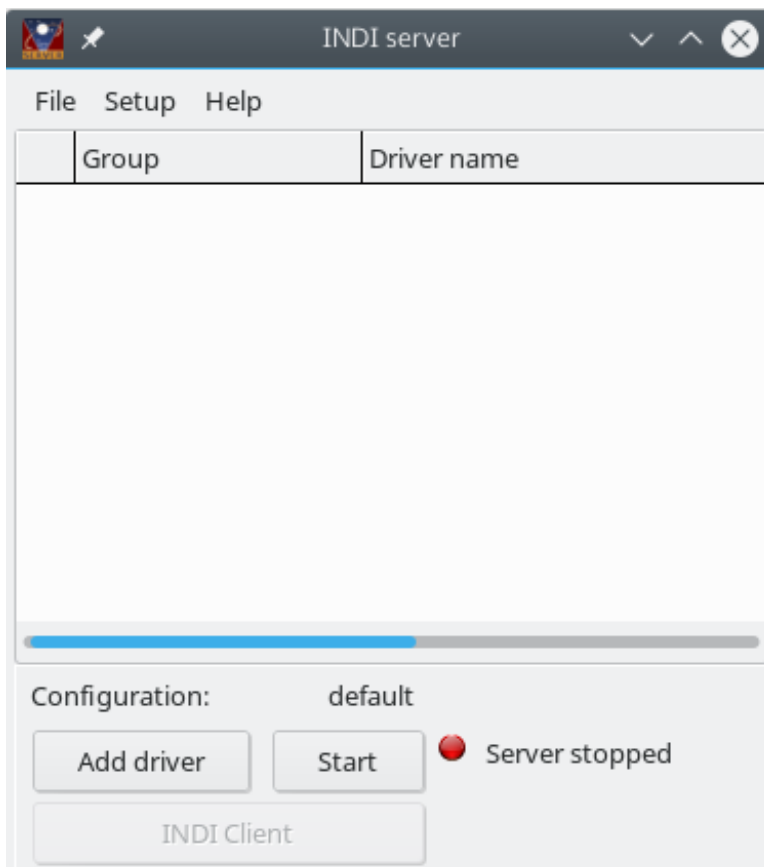
The server is now started and the drivers loaded but before you can use them you need to connect the driver to the equipment. You can do that with your preferred application software or using the **INDI client** integrated to indistarter.



Configuration

Configuration

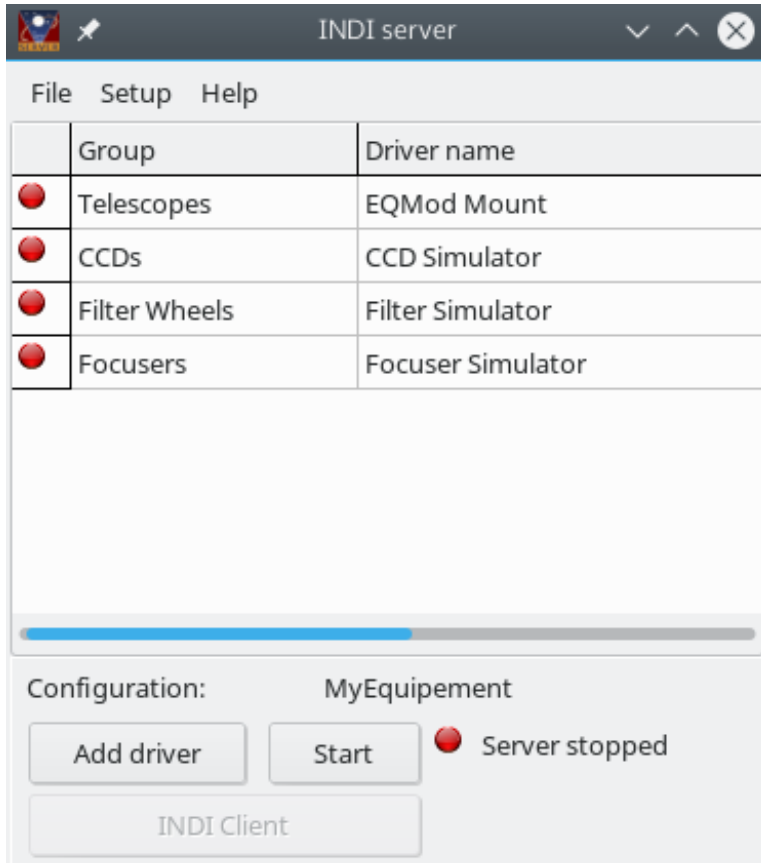
The first time you run indistarter you are presented to this screen:



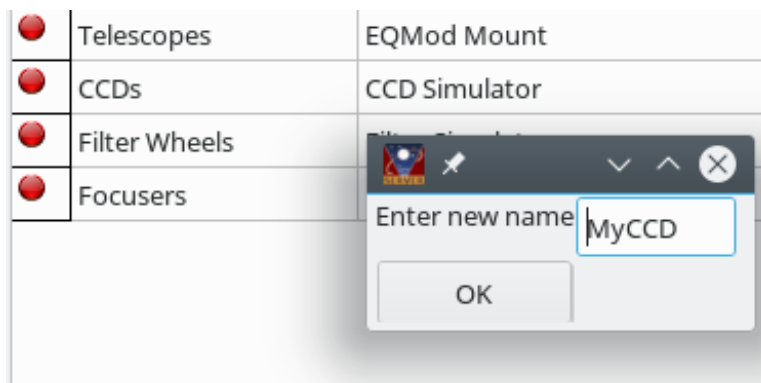
Click the [Setup](#) menu to make a new profile for your equipment.

All the options and the driver list are associate to the profile. So it is recommended you make as many profile as necessary to handle all your different configuration without having to fiddle with the setup every time you change a piece of equipment.

Then click the **Add driver** button to [select the drivers](#) you need.



A right click menu give you the option to rename a driver. This is useful to distinguish two same equipment connected to the same computer.



The same right click menu also let you remove a driver from the profile.

When done you are ready to start the server.

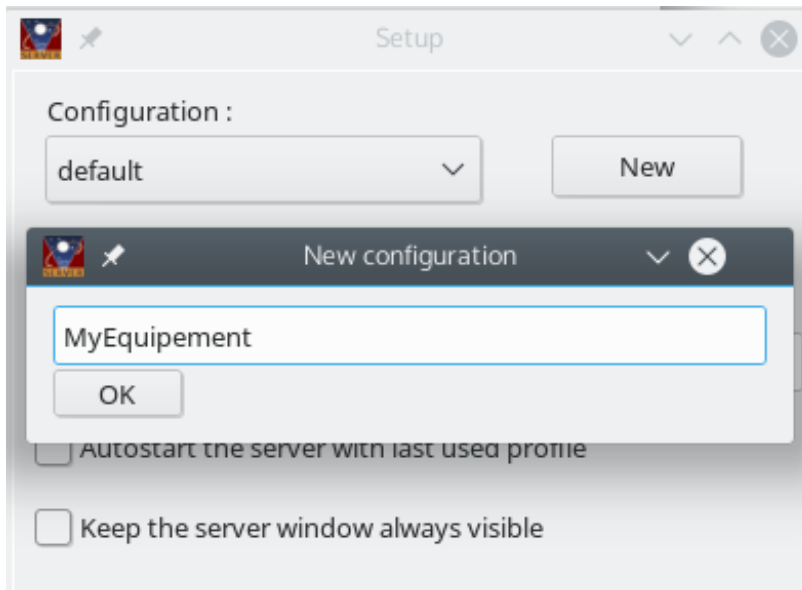
The configuration is saved automatically when you quit the program.

The files are saved in `~/config/indistarter/`

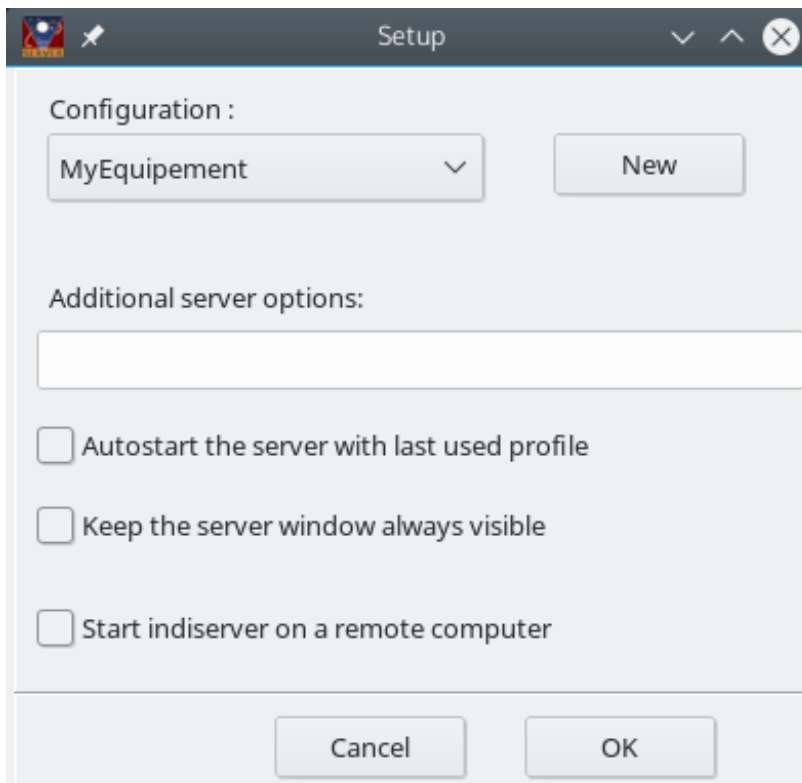
Setup menu

Setup

Click the Setup menu to make a new profile for your equipment:



You can fill other options for the indiserver:



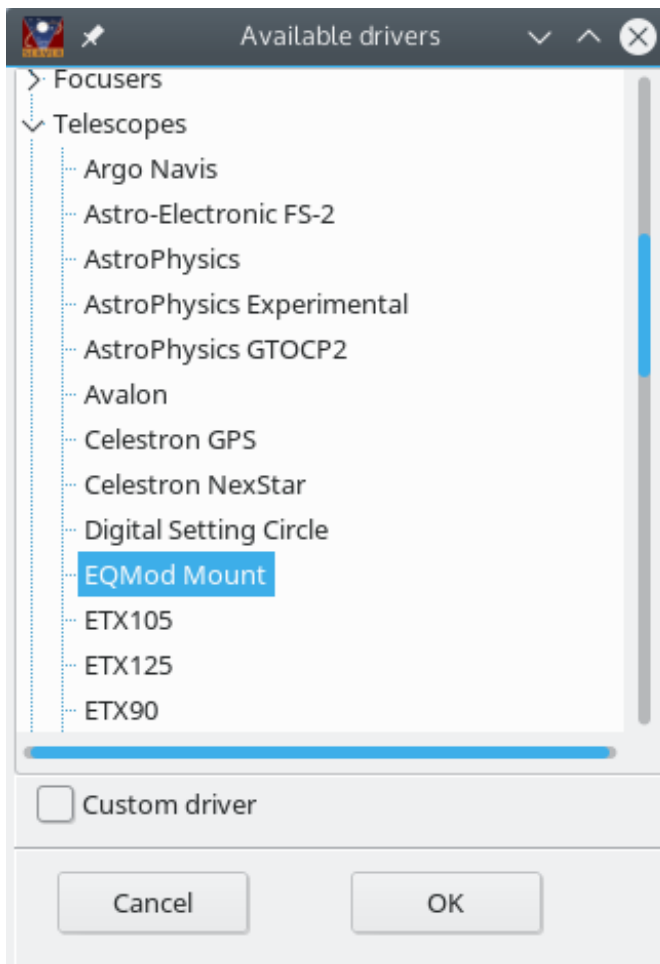
- Select if you want to start the server with this profile when indisarter is started. This is useful to setup everything automatically on a headless system.
- Select if you want to keep indisarter window on top of any other. This help to check if the driver are running in case of instabilities.
- You can start indiserver on another computer than the one running indisarter. In this

case a ssh tunnel is established on port 7624 so you can use this tunnel to connect the applications to the driver.

- For the additional command line options never use -f as it is used internally by indistarter, and do not include any driver.

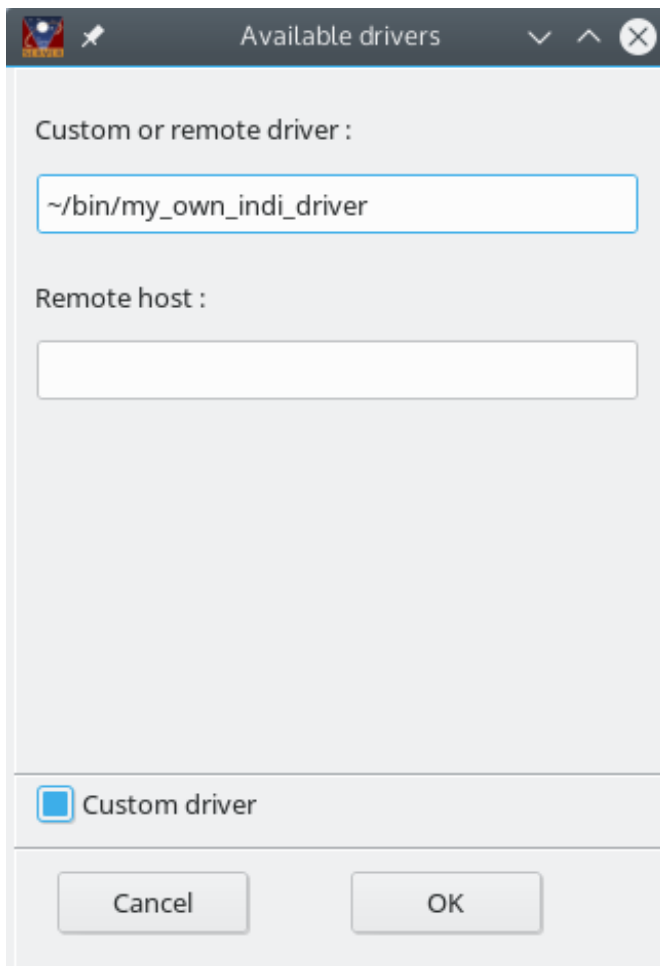
Add drivers

Click the **Add driver** button to open the driver selection screen.



The list include all the drivers installed on the local system running indistarter. Select one at a time and click OK.

Click **Custom driver** if you need to include a driver not present in the list.



Available drivers

Custom or remote driver :

~/bin/my_own_indi_driver

Remote host :

☒ Custom driver

Cancel OK

- Enter the driver binary path
- If you enter a remote host name here this create a link to another indiserver on the remote host that run this driver. This not start the driver on the remote host, it must already be running. [More informations](#)